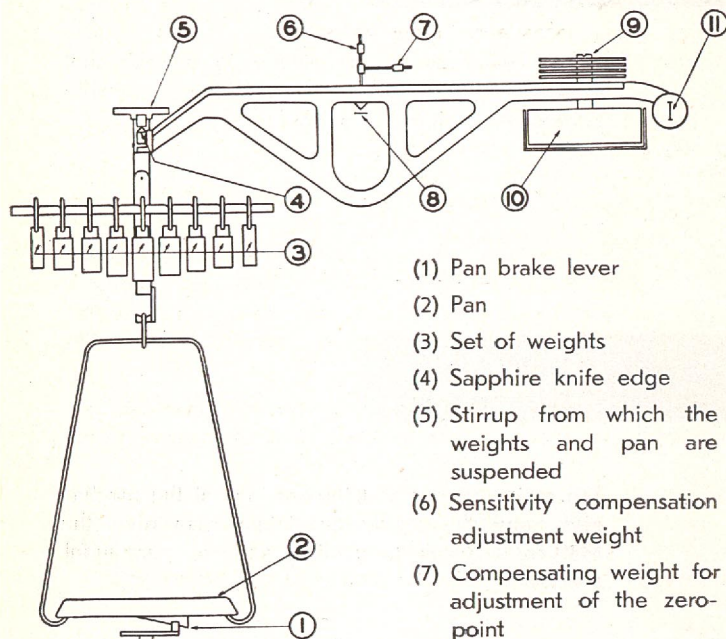


## DIAGRAM



Pan  $\varnothing$  100 mm (30 mm)  
 Base 270 x 500 mm  
 Height 450 mm  
 Voltage 220, 145, 125, 110 V  
 or to order 6 V = ~  
 Net weight about 15 kgs  
 Weight packed for export about 35 kgs

- (1) Pan brake lever
- (2) Pan
- (3) Set of weights
- (4) Sapphire knife edge
- (5) Stirrup from which the weights and pan are suspended
- (6) Sensitivity compensation adjustment weight
- (7) Compensating weight for adjustment of the zero-point
- (8) Center knife edge and plane of sapphire
- (9) Set of plates eliminating errors due to atmospheric changes
- (10) Compensating weight for pan and weights at opposite end of balance, and air damping plunger
- (11) Optical scale plate

**GRAM-ATIC:** In U.S.A. and Canada, the Mettler Balances are known under the trade name „Gram-atic Balances“. They are distributed by the Fisher Scientific Company, Pittsburgh and Montreal and by Eimer & Amend, New York.

## REFERENCES

### CIBA Ltd., Basle

Working with the Mettler Balance is extremely simple and takes considerably less time than with other makes. Since the result is read in figures, mistakes are excluded. The size of the pan and the handling mechanism are particularly convenient, and facilitate work considerably. Another great advantage is the constant loading of the weighing beam. With the zero point properly adjusted, no greater differences than 0.0001 grams could be determined ....

### POLITECHNICAL HIGH SCHOOL, Zurich

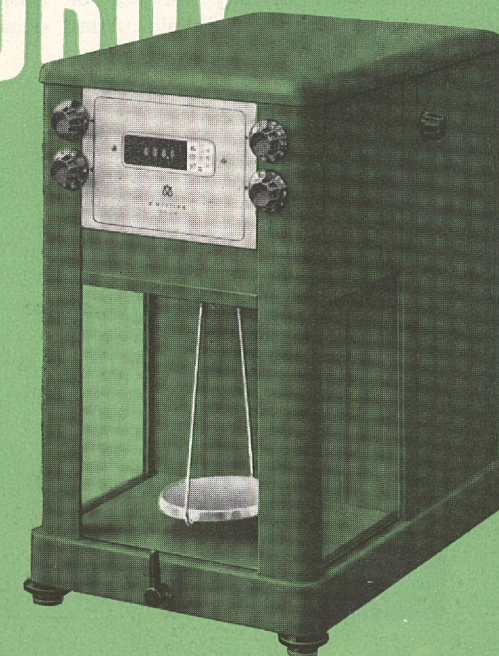
In January 1947 you supplied us with a Mettler Balance type 200 A 4 N. Since then, this balance is in one of the laboratories of the organic-analytic department, and is continually used by a group of 7 to 10 students. Whoever works with the Mettler Balance finds weighing convenient, time-saving and accurate.

The practical equipment of the balance offers numerous advantages. Thanks to its simple use, even an unskilled person can weigh accurately in a very short time. The balance has worked without the slightest trouble since we put it into service. No signs of corrosion or wear could be found anywhere. ....

N.V. Instrumenthandel  
 v/h Dr. D.H. Cocheret  
 Frombergstraat 1  
 ARNHEM

# ACCURATE FAST RELIABLE SIMPLE STURDY

ANALYTICAL BALANCES



E. METTLER ZURICH SWITZERLAND

PELIKANSTRASSE 19 • CABLES METTLERBALANCE

*Ben*

*from Goffing  
 M. 10.10.47  
 this apparatus is  
 his met.*

*dezen  
 kanten  
 orgenen  
 2400  
 Clunder*

*kel. 25414*

Thanks to extensive research, E. Mettler has developed an analytical balance which outclasses the old-time beam weighing balance. Scientists the world over now use the various types of Mettler Balances and highly value these fine instruments of precision.

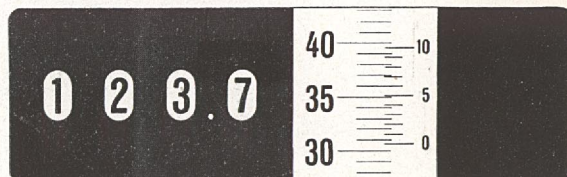
## ACCURATE

Their weights are fixed inside the balances and handled by remote control. They are made of anti-magnetic stainless steel which resists corrosion and wear and thus renders the weights unalterable.

Constant loading of the beam eliminates so-called bending errors and ensures uniform sensitivity up to the maximum loading.

The optical reading range of 115 milligrams is very large in comparison to other makes. The elimination of any weights of less than 100 milligrams help to attain utmost accuracy.

Type E 5	
Maximum loading . . . . .	200 grams
Accuracy . . . . .	$\pm 0,1$ mg
Optical range . . . . .	115 mg
<b>Accuracy of weighing by difference within the optical range . . . . .</b>	
	$\pm 0,05$ mg
Mechanical weight-operating device up to . . . . .	200 grams



Weight = 123,7306 g

## FAST

Weighing with Mettler Balances is 3 to 4 times faster than with any other modern balance.

Adjusting the zero-point and weighing is a mere matter of turning knobs, an operation requiring less than 30 seconds.

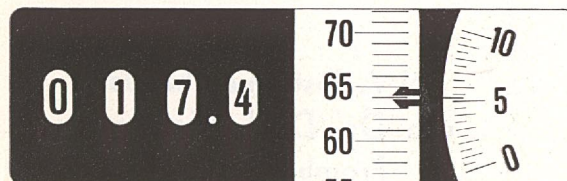
The Mettler Balances are brought to rest quickly, after only a few short oscillations, by an ingeniously designed air damper.

## RELIABLE

Total weight is read directly from one indicator scale located in the front control panel. This excludes errors due to faulty handling or reading.

### TECHNICAL DATA

Type E 6	
Maximum loading . . . . .	100 grams
Accuracy . . . . .	$\pm 0,1$ mg
Optical range . . . . .	115 mg
<b>Accuracy of weighing by difference within the optical range . . . . .</b>	
	$\pm 0,02$ mg
Mechanical weight-operating device up to . . . . .	100 grams



Weight = 17,46452 g

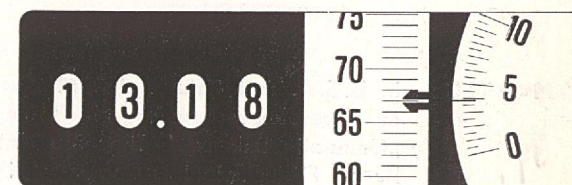
## SIMPLE

Mettler Balances are so simple to operate that a single demonstration is sufficient to enable anyone to weigh correctly.

## STURDY

The entire construction, the bearings of the mechanism, and the sturdy aluminium case give the Mettler Balances long life and a permanent precision.

Type M 5 Micro:	
Maximum loading . . . . .	20 grams
Accuracy . . . . .	$\pm 0,02$ mg
Optical range . . . . .	20 mg
<b>Accuracy of weighing by difference within the optical range . . . . .</b>	
	$\pm 0,002$ mg
Mechanical weight-operating device up to . . . . .	20 grams



Weight = 13,186738 g